

Continuous Tubular Centrifuge

J1250

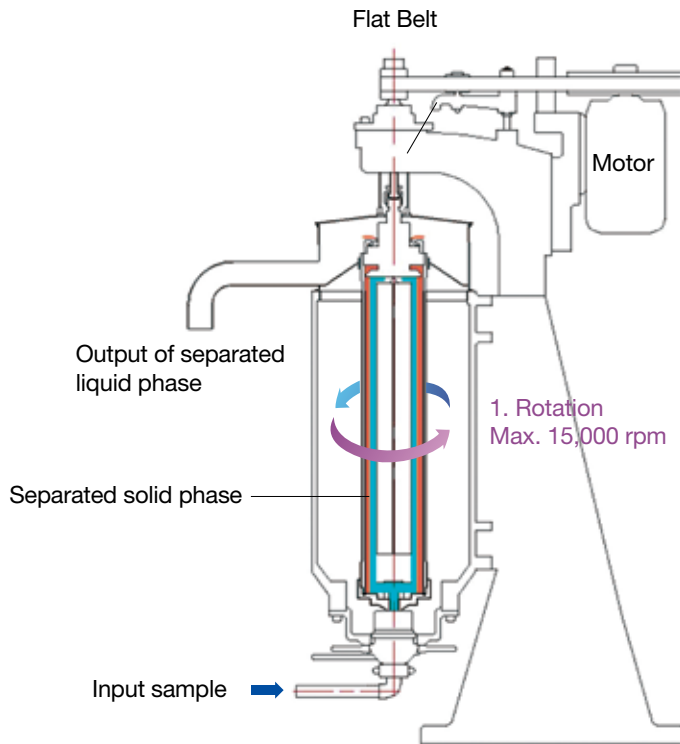
- Tubular type industrial centrifuge for continuous treatment
- Two phase (liquid/solid) separation
- High recovery of sludge (cake type)
- Water jacketed cooling system (optional)
- Up to two pumps
- Easy loading and unloading with safety 4 door-racks
- Intuitive touch-screen control panel
- Robust design and shock proof operation
- SUS (stainless steel use steel) type (Optional)



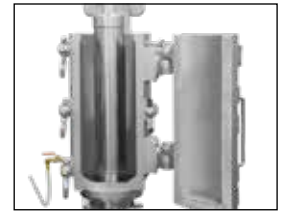
Harvesting Process



Mechanical Structure



Bowl



Door



Injection Pump

Peristaltic Injection Pump
or Diaphragm Pump



Controller

Applications

Pharmaceutical areas

Collection of pharmaceutical intermediates, herb extracts, plant fibers and chlorella

Food processing areas

Soy bean, fat, vegetable oil, starches, grains, gelatin, amino acids, soy sauce, reducing fat in milk

Chemistry industry areas

Cleaning and collection of ink, paints, ammonia, barium, aluminum, zinc, activated charcoal and stainings

Waste water treatment

Cleaning on straining waste water, leather waste water, petroleum tank sludge, waste oil

The other fields

Milk fat processing, cosmetics, cod-liver oil, yeast processing, and many other separation of solution and collection of solids

Technical Specifications

	Tubular Continuous Centrifuge, J1250
Speed	15,000 RPM / 15,800 xg
Max. Capacity	2,200 L/ hr when the density is 1 g/ml
Bowl Capacity	9 L
Bowl Dimension (inner)	125 (Ø) x 735 (L) mm
Bowl Material / Weight	SUS / 27 kg
Display & Control	10" Touch Screen LCD, Stand-alone
Parameters Displayed	Speed in RPM and RCF, Time, Program, Pump and Operational Status
Time Control	99 hr 59 min 59 sec or Continuous
Motor	3.7 kW, 50/60 Hz
Cooling Unit	Optional (Factory Installation)
Door Opening	Front
Case Material	Cast Iron (Optional SUS)
Power consumption	4.7 kW
Power Input	220V or 380V 3 Phase
Dimension of Main Body	840(W) x 450(D) x 1600(H) mm
Weight	Complete System : approx. 713 kg (Main body 564 kg, Bowl 27kg, Controller 52kg, Accessories incl. a Pump 70 kg)

Ordering Information

Cat. No.	Description
CC1102	J1250 Tubular Continuous Centrifuge, Main Body incl. A H-beam Base, In/Out Tubes and Operating Tools
CC2001	Bowl (SUS) with a Trolley and One Set of Harvesting Teflon Sheets (3 ea/set)
CC3001	Controller with 10" LCD and Inverter for 220V, Stand-alone
CC3002	Controller with 10" LCD and Inverter for 380V, Stand-alone
CC4001	Peristaltic Tube Pump incl. a Pump Stand (WT600-2J)
CC4002	Diaphragm Pump for Highly Viscous Sample (KD73L) incl. a Pump Stand
CC6001	Harvesting Sheet of Teflon (395 x 735 mm), 3 ea/set